

Intermediate Articulated Dragon

by Pippa Dyrлага

You will need:

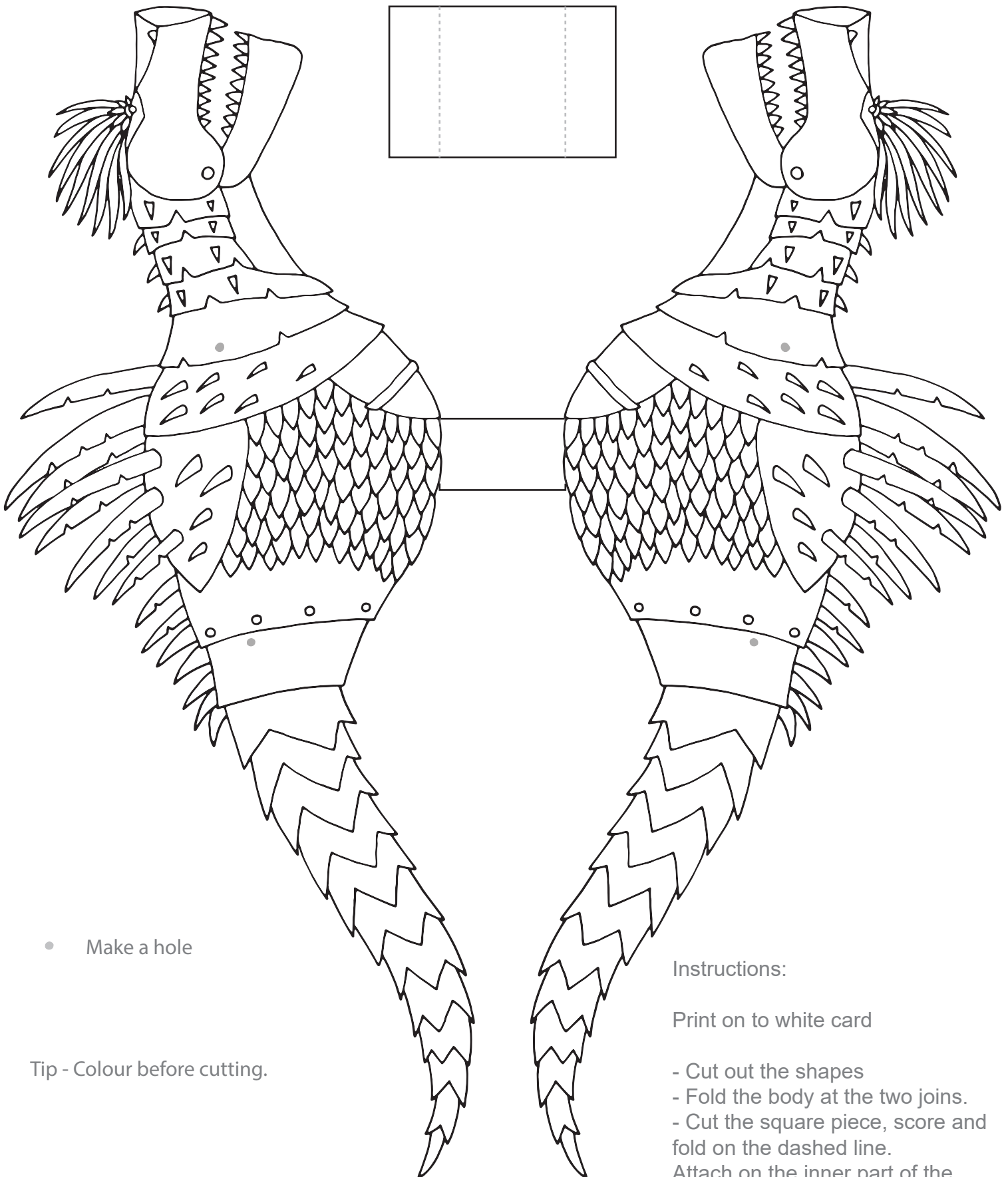
- Printer
- 1 x sheets of thick white card (around 220 gsm is best)
- 1 x sheet of white card (160 - 220gsm)
- Coloured pencils/pens (optional)
- Craft knife
- Small split pins
- Glue stick

Instructions:

1. Print out the two template pages.
2. Colour in prior to cutting out (optional).
3. Cut around the dragon body following the outline.
4. Fold the card on both sides at the join where the lines meet at the bottom of the chest of the dragon, creating a gap between both bodies. (Try and make sure this is as even as possible).
5. Cut out the small square and lightly score on the dashed lines. Fold the flaps at the score line and use these to attach on the inner side of the dragon in the middle of the body, towards the top of the back. Make sure that the piece sits between the grey holes. This is for support.
6. Place some glue on the inner side of the head near the mouth and the tip of the tail and fix both sides of the dragon to each other.
8. Pierce holes using the grey dots as a guide, for the split pins.
7. Take the second sheet and cut out the leg pieces, keeping each leg set together.
8. Pierce holes using the grey dots as a guide. Use these holes to attach each piece together using the split pins.
8. Attach the legs to the body.

Intermediate Dragon

Body



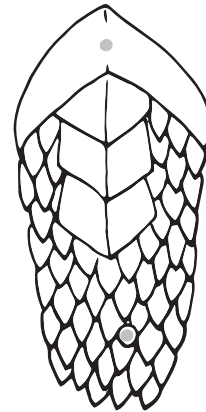
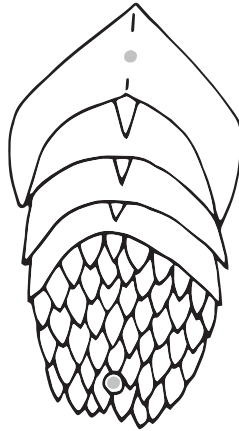
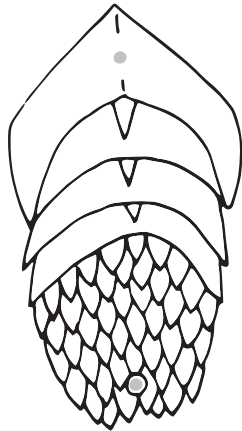
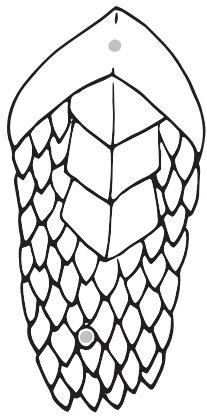
- Make a hole

Tip - Colour before cutting.

Instructions:

Print on to white card

- Cut out the shapes
- Fold the body at the two joins.
- Cut the square piece, score and fold on the dashed line. Attach on the inner part of the body in the middle towards the top of the back for support.
- Pierce a hole for the split pins in the grey area



Intermediate Dragon

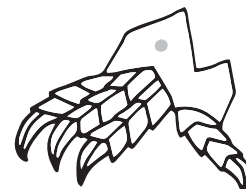
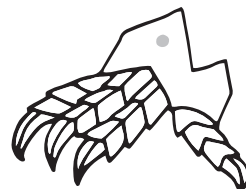
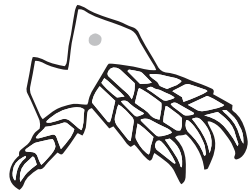
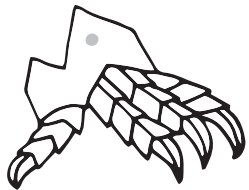
Legs

Instructions:

Print on to thick white card

- Cut out the shapes
- Pierce a hole for the split pins in the grey area

- Make a hole



Back right

Front Right

Front Left

Back Left